

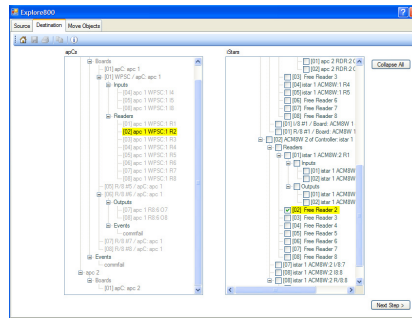
# CONTROLLER MIGRATION TOOL

APC TO ISTAR CONTROLLER MIGRATION TOOL (CMT-800)

## APC TO ISTAR DATA MIGRATION

Many sites are replacing apC panels with iSTAR panels to take advantage of newer technology and features. C-Cure's Administration Client does not support moving readers, inputs, and outputs from apCs to iSTARs—this must be done by hand and can take several hours per apC.

- Intuitive device tree display provides quick navigation
- Detailed display of actions to be performed to prevent operational errors. This information can be saved or printed
- Full logging of activity for documentation and audit purposes
- Easy to install and set up. Built with modern .NET technology
- Moves readers, inputs, outputs, I8 and R8 boards from any apC to any iSTAR Classic/Pro, Edge, and eX. The application is fully aware of Wiegand and regular Star Couplers
- Time-saving Rename function—just double-click on objects in the device tree
- Flexible licensing allow for use on the server or an unlimited number of workstations connected to that server



## CONTROL INSTALLATION COSTS

There are two factors affecting the cost of migrating to iSTARs:

- Price of the new hardware and amount of labor required to install the hardware and change the wiring (easy for integrator to determine)
- Labor to reprogram C•Cure (difficult to estimate, leading to cost overruns)

The C•Cure Administration client doesn't support moving readers, inputs, and outputs. You have to delete the old object and add a new one. Doors, elevators, and groups that use these objects must be tracked down and changed or replaced.

All of this can lead to hours of unanticipated programming time *per apC*. These hours add up, eating away at your profit.

## KEY FEATURES

- Recognizes apCs, iSTARs and attached boards as configured in C•Cure
- Intuitive tree display
- Fast and stable. Just check items and move through three easy steps
- Takes advantage of years of C•Cure experience. Designed to work with all version 9.4 or higher
- Produces a list of changes and dependencies to ensure proper hardware transfer
- Small footprint, simple install. Can run on server, workstation or laptop

## BENEFITS

- Greatly reduce labor needed to reprogram C•Cure. Fixed license cost
- Fewer technician programming errors
- Flexibility in hardware cutover—reduced downtime



**FIS**

## FACILITY INFORMATION SYSTEMS

109 Prince Street  
Newton, MA 02465

Phone: 617-558-5587  
Fax: 866-496-1042  
E-mail: [sales@ccure.us](mailto:sales@ccure.us)

---

WE'RE ON THE WEB!

[WWW.CCURE.US](http://WWW.CCURE.US)

---

ADVANCED C•CURE TOOLS AND  
PROFESSIONAL SERVICES

*Jeffrey Bennett founded Facility Information Systems in 1996 following 18 exciting years at Software House. There, he had senior engineering, design, and management responsibilities. The goal of FIS was to provide solutions to customers with Software House access control products not available through Software House's standard product and service offerings.*

*Rick Neafus has been providing expert services through FIS since 1999. Prior to that, he was a lead support specialist at Software House. He is well known in the industry as a talented "hands-on" C•CURE, database, and network resource.*

- 
- *10+ years providing C•CURE professional services. 20+ years working with C•CURE products*
  - *Staffed by former Software House engineers and major integrator technical specialists*
  - *Real-world network and IT design/installation experience for major users in industry, government, education, aviation, medical, banking, and insurance*
  - *Work performed for hundreds of customers around the world*

---

## FREQUENTLY ASKED QUESTIONS

**1. Who is using CMT?**

CMT is being used by integrators and technical users around the country.

**2. How is CMT licensed?**

Pricing is based on the C•Cure model. Each license covers one system serial number. Consult FIS for details. A trial version is available which is limited to two apCs.

**3. Is it compatible with future version of the 800 and new panels?**

The product price includes one year of support and updates. Updates are available after the first year for a fee.

**4. Is it necessary to take C•Cure down doing the conversion?**

apC and iSTAR panels must be taken offline prior to running CMT. Although the changes are immediately displayed on the C•Cure configuration screens, the C•Cure driver needs to stop and restarted for the changes to be download.

**5. What platforms are supported?**

Any machine capable of running C-Cure is compatible with CMT. Installation of .NET 2.0 is required (free download if not already installed).



Facility Information Systems specializes in C•CURE software, providing custom and off-the-shelf solutions. Call, write, or visit us on the web for a free consultation.

Phone: 617-558-5587  
Fax: 866-496-1042  
E-mail: [sales@ccure.us](mailto:sales@ccure.us)  
Web: [www.ccure.us](http://www.ccure.us)

C•CURE® and iSTAR® are registered trademarks of Tyco International.

© 2012 Facility Information Systems. All rights reserved.